



# Florida State Parks

Volunteers | You Are Our Valued Park Team Members



# Who Are We?

## Florida State Parks

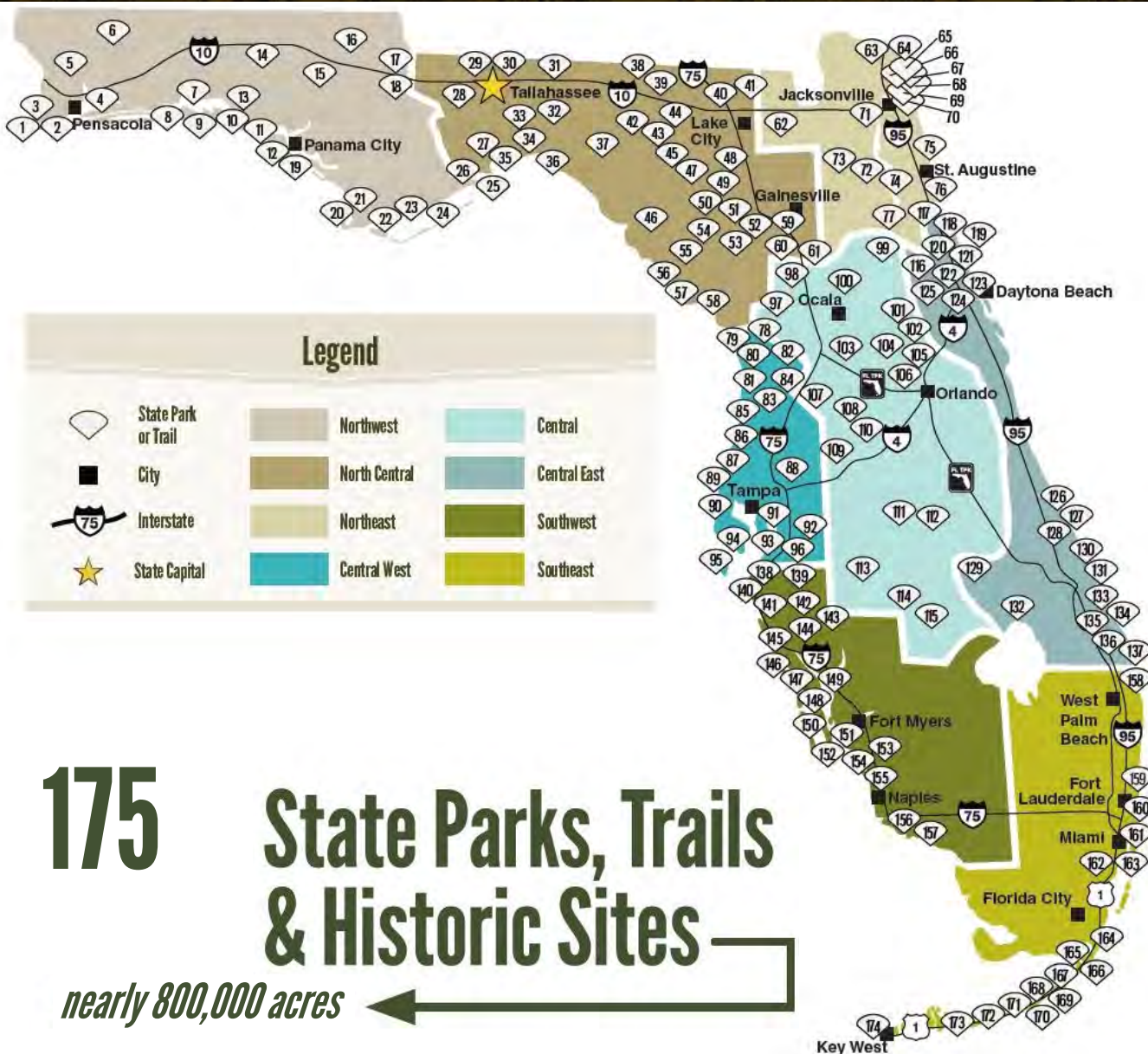
# Fast Facts

### Legend

	State Park or Trail		Northwest		Central
	City		North Central		Central East
	Interstate		Northeast		Southwest
	State Capital		Central West		Southeast

**175** State Parks, Trails  
& Historic Sites

*nearly 800,000 acres*





# Who Are We?

## Florida State Parks

# Fast Facts



## 100 Miles



## of Sandy Beaches



## 2,200 Miles of Trails



## Concessions

## 92





# Who Are We?

## Florida State Parks

# Fast Facts



**1**  
**Lodge**



**205**  
**Cabins**



**3,306** Full-facility  
**Campsites**



# Who Are We?

**Florida  
State Parks**

# Fast Facts



**29,446,353  
Visitors**



**1,410  
Employees**



**80+ Friends  
Groups**



# Who Are We?

## Florida State Parks

# Fast Facts



**20,453**  
**Volunteers**



**1,196,748**  
**Volunteer Hours**



# Who Are We?



**4x Winner  
of National  
Gold Medal**

**Florida  
State Parks**

**Fast  
Facts**

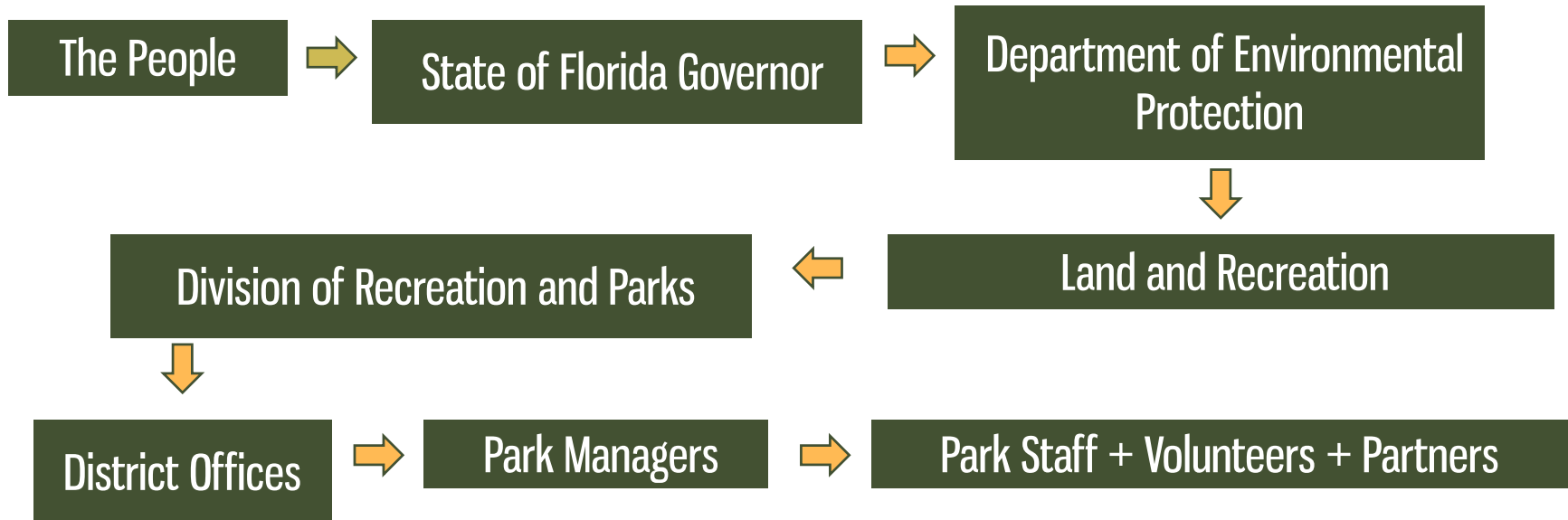
**\$66.7 Million  
Total Revenue**



**\$2.6 Billion  
Economic Impact**



# Who Are We?



We greatly appreciate  
the time and talents  
contributed by  
volunteers!



# Volunteers Assist With Our Mission



Provide resource-based recreation,  
while preserving, interpreting and restoring  
natural and cultural resources.





# Volunteers Serve All Areas “The Big 5”



1. Visitor Services



2. Administration



3. Resource Management



4. Protection



5. Maintenance



# Our Valued Park Team Members

You are **INTEGRAL** to the work we do to accomplish **OUR MISSION**



Each year, volunteers contribute over 1 million hours!



# Individual “Regular Service” Volunteers

## Opportunities are Diverse

Examples of regularly scheduled positions:

- Ranger station attendant
- Park maintenance assistant
- Special event coordinator
- Guided tour or program leader
- Exotic plant removal
- Beach, waterway or trail rover
- Internships and more



Park policies vary for youth under the age of 18 - check with park for details



## Serve in an outstanding location

- Min. 20 volunteer hours per week per campsite
- Free campsite in exchange\*
- Up to 16-week stay at one park
- Enhance a visitor's experience
- Assist with facility maintenance
- Assist with various park projects
- [List of parks with park resident sites](#)

\*Parks without campgrounds may also have park resident volunteer opportunities





# Groups “Teams”

## Large groups welcome!

- Beach clean-ups
- Remove exotic plants
- Trail maintenance
- Repairs and maintenance
- Special events
- Citizen science... and more



Family, civic, community, church, scouting, corporate, and student groups are all invited to help outdoors



# Join a Friends Group



Florida State Parks Foundation and 80+ park “Friends,” also known as Citizen Support Organizations, are nonprofits that provide support by volunteering, educating visitors, hosting events, and raising funds for specific park projects.



# Benefits & Recognition

## Free entry passes\*

- 50-hours Volunteer ID - free entry to your park & 6 additional state parks
- 250-hours – Special Volunteer Annual Pass

\*some restrictions apply

## Certificates and pins for hours served

- At 250, 500, 1000, 2000, 3000, 4000, 5000, 6000, 7000, 8000, 9000+ hours
- 10,000, 20,000, 25,000 and 30,000 hours – plaque and letter from the Director
- Exceptional Service & Dedication certificate given at any time

## Thank You for Making a Difference!

### 50 Hours Volunteer ID

Six free any park entries for you and your family



**FLORIDA**  
STATE PARKS

Name: \_\_\_\_\_

Park Issued: \_\_\_\_\_

Volunteer Coordinator: \_\_\_\_\_

Expiration Date: \_\_\_\_\_

1

2

3

4

5

6

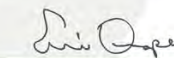
## 250 Hours of Service

Presented to

<< **NAME** >>

In grateful appreciation for your volunteer contributions to  
the Florida Park Service

Park Manager



Eric Draper, Director

of State Park Here >>

State Park

XX/XX/XXXX

Date



**FLORIDA**  
STATE PARKS  
...the Real Florida<sup>SM</sup>





# Orientation & Training

## Build skills, abilities, and park knowledge and your position

- Park orientation and intro to the park's [Unit Management Plan](#)
- Annual required training: Sexual Harassment, Diversity, and Workers' Compensation
- Ongoing training for duties and for professional growth
  - Equipment use, UTV/ATV operation, canoe/kayak, species monitoring





# Responsibilities & Expectations



## Volunteer rights

- Receive workers' compensation and liability under State of Florida law
- Be part of the Florida Park Service team
- Have opportunities for growth
- Be involved in a variety of experiences
- Provide input on the volunteer program
- Be recognized for contributions



# Responsibilities & Expectations



## Volunteer professionalism

- Follow park policies and guidelines
- Complete annual agreement and training
- Provide top-notch visitor services
- Work as a team with staff and volunteers
- Wear the uniform with pride
- Be reliable in fulfilling tasks and shifts
- Be a steward for park resources
- Work safely and smartly
- Attend training sessions and meetings
- Report service hours



# ***NEW*** Volunteer Uniform – Transitioning in 2020/21



***NEW*** Class B – Day to day uniform



***NEW*** Class A – Dress uniform

- Transitioning old to new through 2021
- ***NEW*** nameplates, and pins when tracking service hours in the Volunteer Portal



**VOLUNTEER**

Your name



# NEW Volunteer Uniform – Symbol of Service



## Class A – Dress uniform

- Green polo shirt (short sleeve only)
- Khaki pants, shorts or skirt
- Gold nameplate
- Brown leather belt
- Brown close-toed shoes/boots and socks

## Class B – Day to day uniform

- Green polo, t-shirt (short or long sleeve) or khaki vest
- Same as Class A – bottoms, nameplate, belt, shoes/boots and socks
- Green cap or wide brim sunhat, and windbreaker (optional)



# Uniform – Historical Period Clothing

## Cultural sites, Programs & Re-enactments

- Wear appropriate period clothing for living history interpretation
- Your park will specify what attire is approved and at what times





# Volunteer Portal – Your time is valuable

## Easily track your service

- Update your information
- Complete required annual training and the Volunteer Agreement
- Enter hours
  - See cumulative hours – to receive certificates, pins, and passes!
- Search and apply for new volunteer opportunities

### [Go to Vsys Live: Volunteer Portal](#)

### Volunteer Portal - Florida State Parks

[Home](#) [Applications](#) [Opportunities](#) [Resources](#) [Reset password](#)

[Sign In](#)

**Welcome!**

Volunteers are integral to the Florida State Parks team as we work together to preserve, interpret and restore ...the Real Florida.

**Current volunteers:**

Thank you for all you do! Login to access your profile, enter hours and more.

**Interested in volunteering?**

To be considered for all volunteer opportunities at the locations you specify, submit a resident, individual or group application.

You can browse volunteer opportunities. To be considered for a specific opportunity, first create a profile by submitting an application. Then login with your User ID and password to apply directly to that opportunity.

**Need more information?**

[Volunteer Program Overview \(PDF\)](#)

[Applicant User Guide \(PDF\)](#)


[Current Volunteer User Guide \(PDF\)](#)

[Visit our website to learn more](#)

[Internship Information](#)

**Make a Difference**

**Volunteer!**



**FLORIDA**  
STATE PARKS





# Welcome to the team!

Thank you for supporting Florida State Parks



#FLStateParks | [FloridaStateParks.org](https://FloridaStateParks.org)