

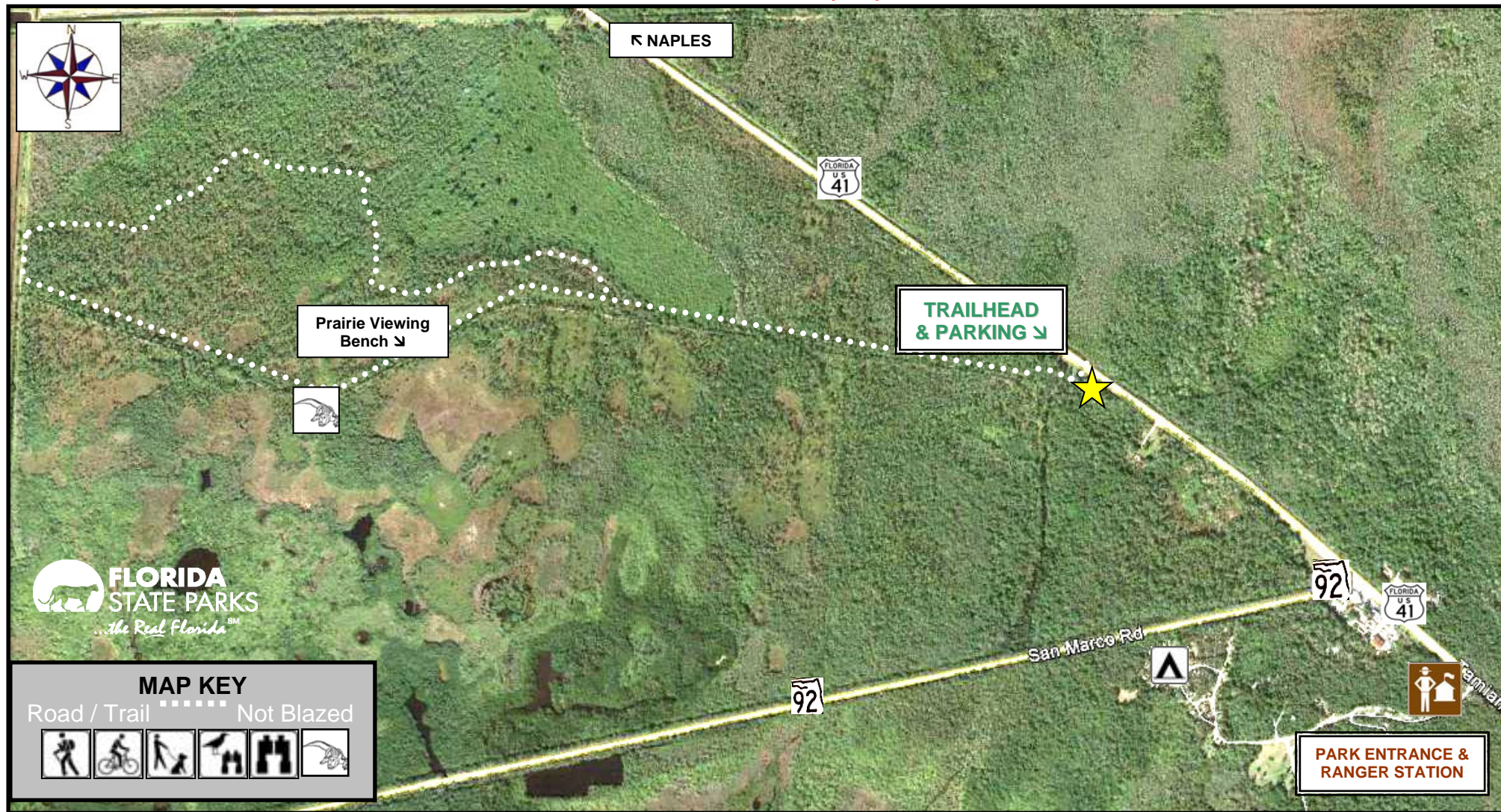
PRAIRE HAMMOCK TRAIL / Mountain Bike Trail (3.5 miles)

MUST BE OFF THE TRAIL BY 4:00 pm EST (Winter), 5:00 pm EDT (Summer)

ENTRANCE FEE REQUIRED

RANGER STATION: (239) 393-7306

EMERGENCY: 911



TAKE WATER, SUNSCREEN AND INSECT REPELLANT

This trail is suitable for biking and walking. The trailhead is along US 41, about 3/4 mile west of the main park entrance. Park in the grassy parking lot at the trailhead. Please do not block the entrance gate. Walk around the gate and proceed ahead for about 25 yards where the trail turns right. You are now on the "Old Marco Road" section (1.5 miles). This is a dirt & gravel road. Wet conditions may apply during the summer months. About 1/2 mile from the trailhead, look right for a trail spur with a bridge. This is where the trail goes off Old Marco Road and winds along for approximately 1 mile, leading to a service road. Turn left onto the service road and walk about 150 yards until you see a dirt road on the left. You are now back on Old Marco Road which will return you back to the main parking area.



Please come to the Ranger Station to register before going on this trail. One of the attractions of the Everglades and Big Cypress is to hike through a wet cypress swamp. Much of this trail is wet during the year except in winter and early spring. Wildlife sightings such as bear and bobcat are not uncommon but they avoid humans whenever possible. The trailhead is along US 41, about 3/4 mile east of the main park entrance on the north side of the highway. Look for the opening in the guard rail along US 41 with a small gravel road. Please lock the gate behind you and proceed to the parking area before the chained gate (do not block). The trail can be accessed to the right of the large Adventure Trail sign. There is a service road between the two trails that runs north/south. Challenges along the trail include a cypress swamp with clear, cool water that may be as much as waist-deep, depending on recent rainfall. The SW part of the trail has mud that is ankle to knee-deep. People wanting to camp overnight on the primitive campsite must register at the Ranger Station or call (239) 393-7306. There are no facilities - carry in, carry out. There is no vehicle access to the campsite, and it is about a 2.5 mile hike from the parking area.

MUD BAY IS INACCESSIBLE AT LOW TIDE!

