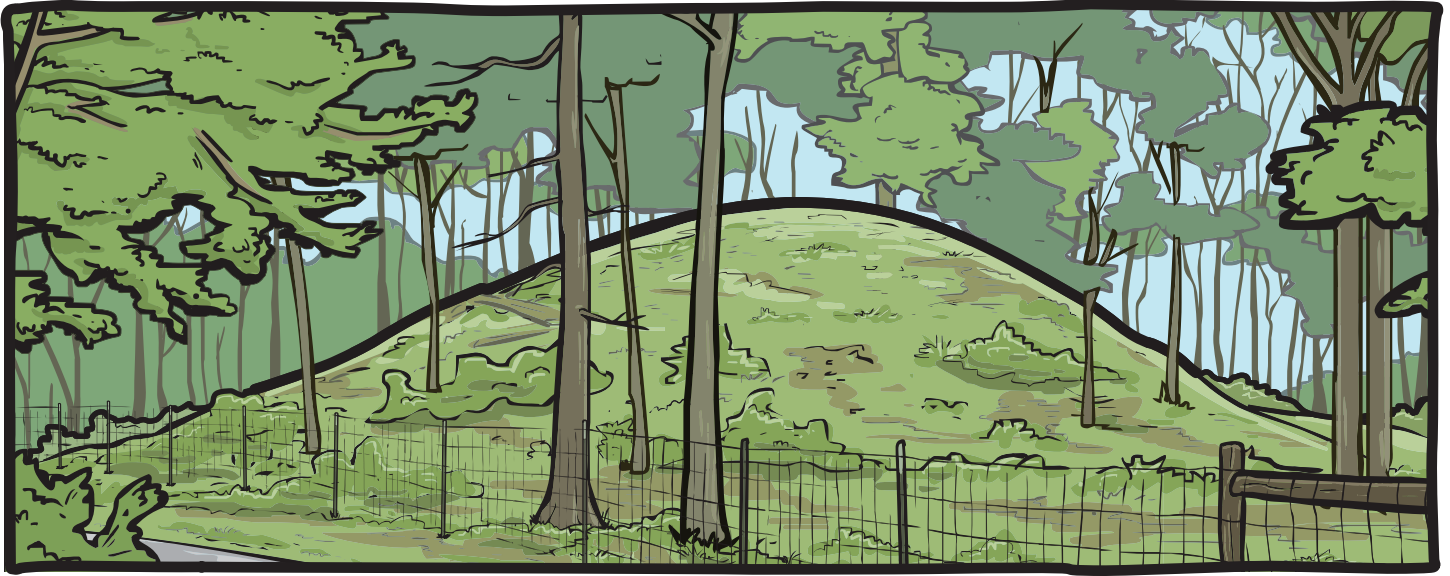


MONUMENTAL MOUNDS

Name _____

Date _____ Park _____



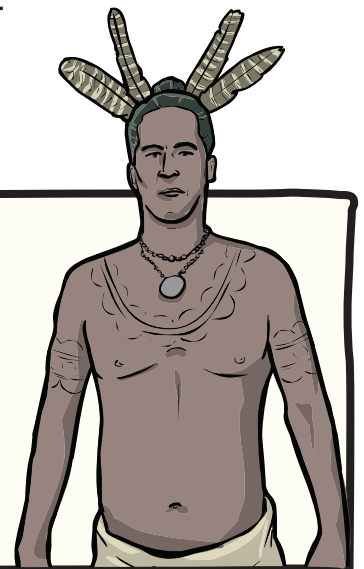
American Indians lived in North America long ago. Many of these tribes built mounds. Mounds were important in Native American society and were used for ceremonial, religious, and burial purposes. Many Native American mounds in Florida have been preserved in state parks.

WHAT DOES THIS MEAN?

Let's break it down.



American Indians created these mounds with no modern technology, they used man power. Some mounds in Florida were built by carrying baskets of earth from one location to another. Some were built by piling shells high to toward the sky. The mounds you see today are very different from what they looked like hundreds of years ago and each tell its own unique story.



Some Florida State Parks with Mounds

- Cedar Key Scrub State Reserve
- Crystal River Archaeological State Park
- Lake Jackson Mounds Archaeological State Park
- Hontoon Island State Park
- Letchworth-Love Mounds Archaeological State Park
- Madira Bickel Mound State Archaeological Site



There is more this way!



CULTURAL RESOURCES ACTIVITY

MONUMENTAL MOUNDS

Use what you have learned today about Native American mounds to answer the questions below.

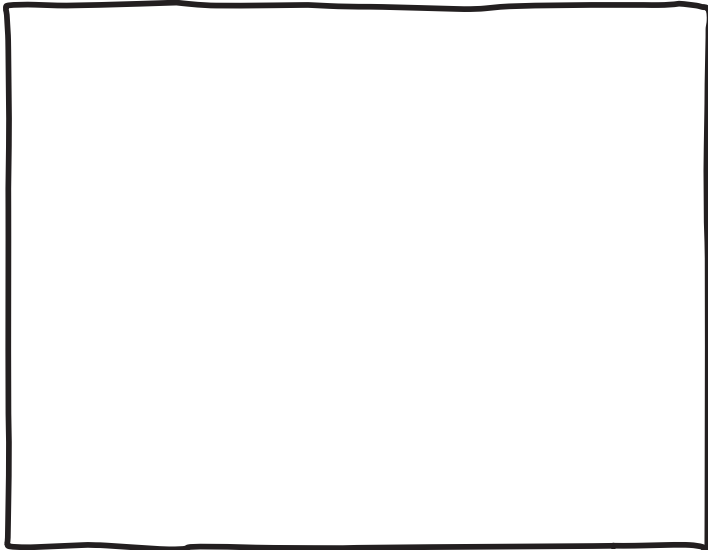
Can you find an exhibit, kiosk or brochure which describes ancient people who have used the park before you? Who were they?

What does the evidence tell you about what they did or the way they lived?

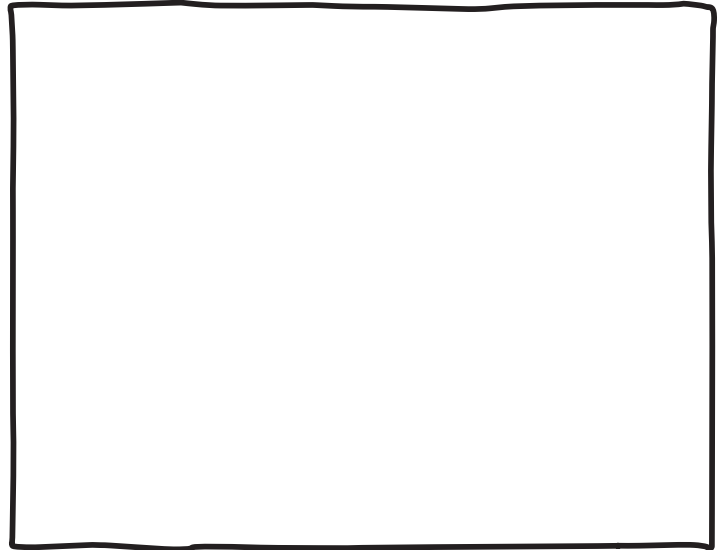
Examine the images below. Circle things used to create mounds.



Draw how a mound you have observed used to look like in the box below.



Draw how a mound you have observed looks now in this box.



List the differences between the past and present mounds.
