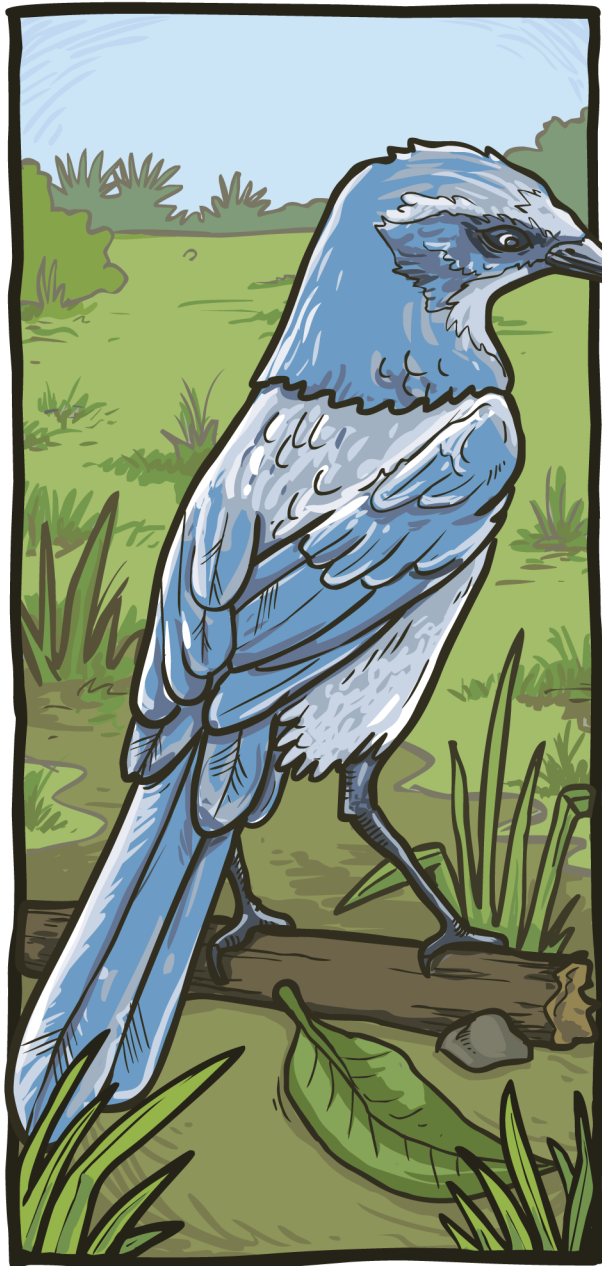


Florida Scrub-Jay

(Aphelocoma coerulescens)



Florida Scrub Jay

Instant ID

- A blue bird with a gray back and belly
- Blue “necklace” separates a white throat from gray belly
- Wings and tail are unmarked
- Length up to 12 inches, wingspan up to 13 1/2 inches
- Juveniles have a gray-brown head for first five months

Native Niches

- Prefers scrub habitats which undergo periodic burning
- Florida scrub includes sand pine and xeric (low rainfall) oak habitats with trees ranging in height from 3 to 5 1/2 feet
- Average home range is 25 acres

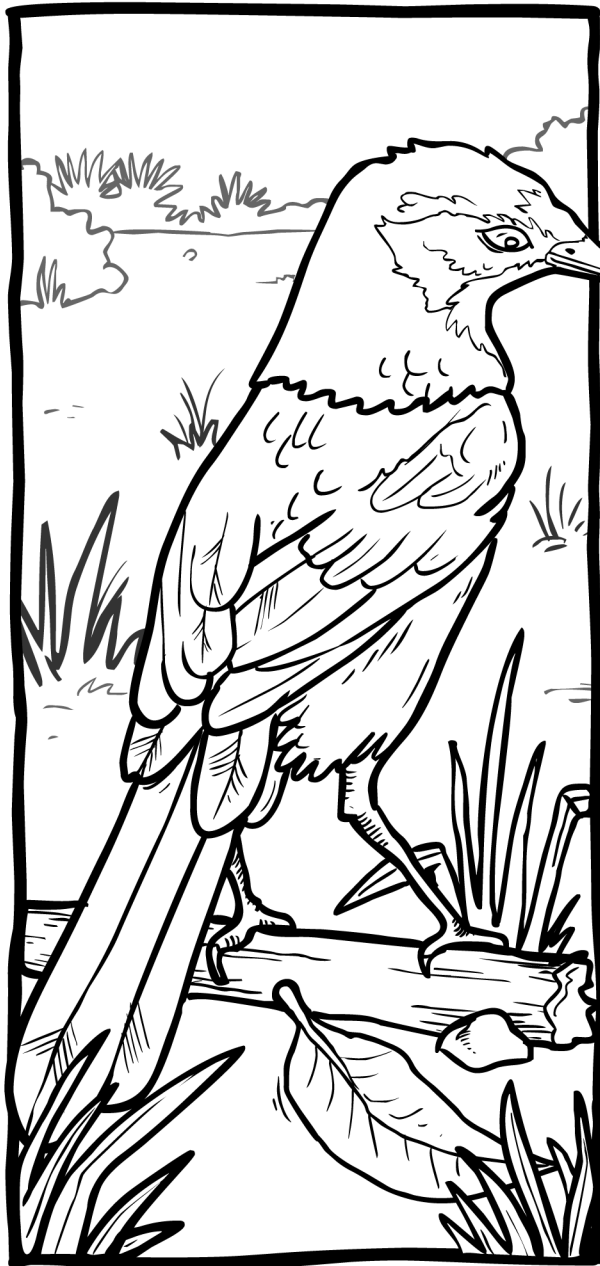
Favorite Foods

- In winter it eats mainly acorns
- Also eats insects, small vertebrates, berries and fruit



Florida Scrub-Jay

(*Aphelocoma coerulescens*)



Florida Scrub Jay

Critter Characteristics

- Lives in complex family groups made up of parents, older siblings and babies
- Sometimes “adopts” scrub-jays from other families
- Take turns guarding the nest
- All family members feed the young, but only parents build the nest and incubate the eggs

Population Protection

- A federally listed threatened species
- Most of the estimated 7,000 square miles once suitable for scrub-jays has been destroyed
- Continued conservation and prescribed burns are needed to maintain scrub-jay habitat

